

01 November 2016

Mutsho

(A translation of weather in Tshivenda)

Weekly Weather Forecast



Weekly Outlook - 1 November 2016

Temperature

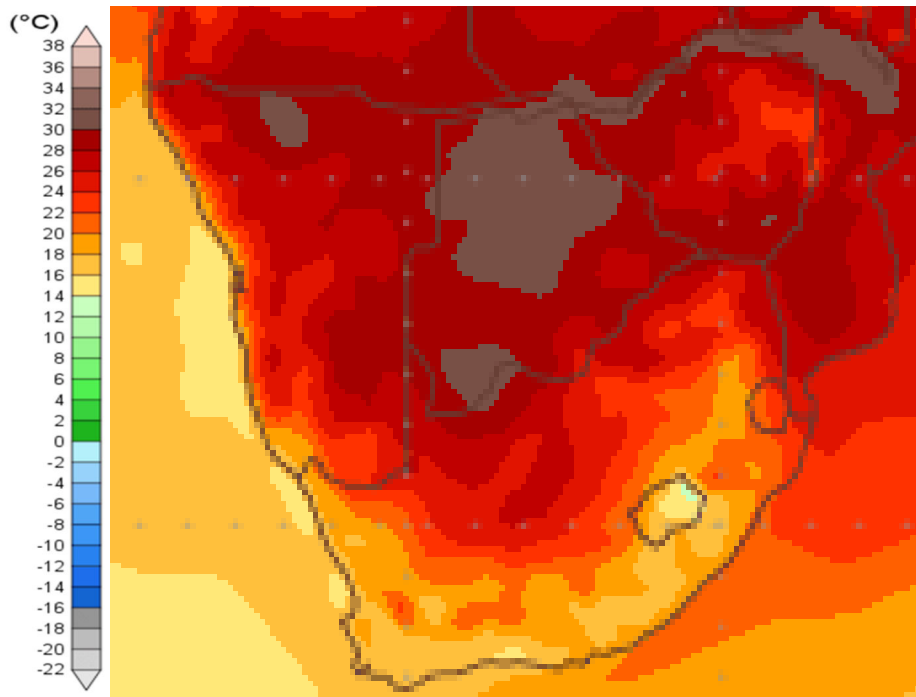


Figure 1: Mean surface temperature from Tuesday 1 November to Wednesday 8 November 2016

Mean temperatures for the northern regions of South Africa, Limpopo, North West and northern Northern Cape will be between 20 to 24 °C. The rest of South Africa will experience mean temperatures between 14 to 20 °C.

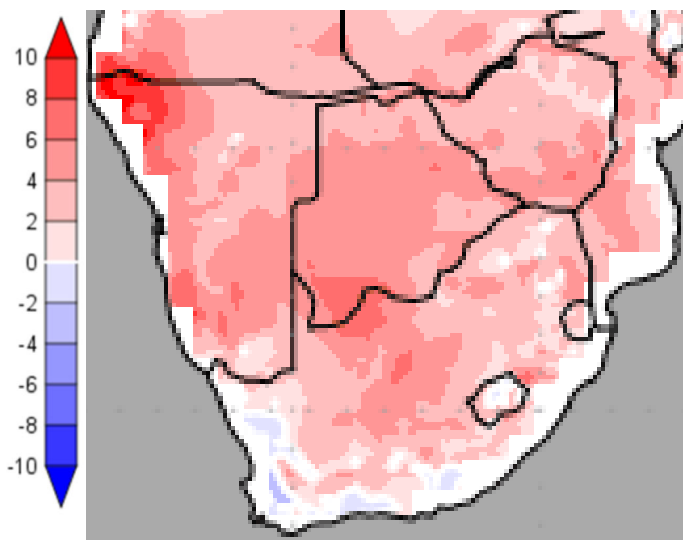


Figure 2: Temperature anomaly for Tuesday 1 November 2016 to Wednesday 8 November 2016

Most parts of South Africa will experience warmer than normal temperatures. Coastal regions will experience normal temperatures for this time of year while some areas in the Western Cape and along the west coast will experience cooler than normal temperatures.

Temperature forecasts from the **National Centers for Environmental Prediction**. Normal Temperature derived from CRU monthly climatology for 1901 – 2000
Information from: <http://www.wxmaps.org/outlooks.php>

Credits:

1. The Center for Ocean-Land-Atmosphere Studies
2. George Mason University



Rainfall

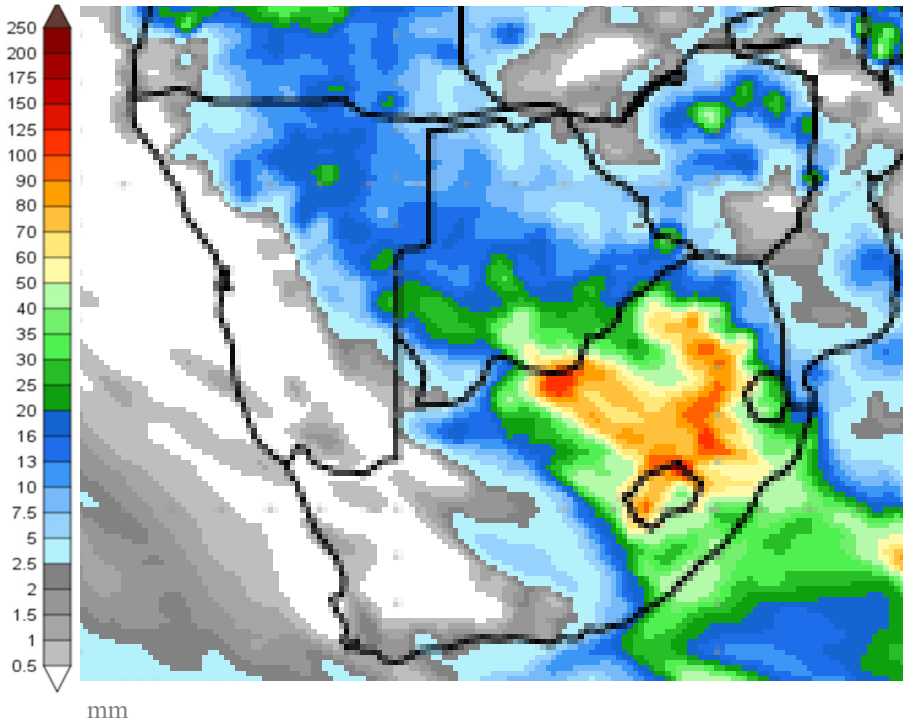


Figure 3: Precipitation for Tuesday 1 November 2016 to Wednesday 8 November 2016

Rainfall is expected over most of the summer rainfall region during the coming week. 50 mm is predicted for most areas while isolated areas will receive between 80 to 100 mm.

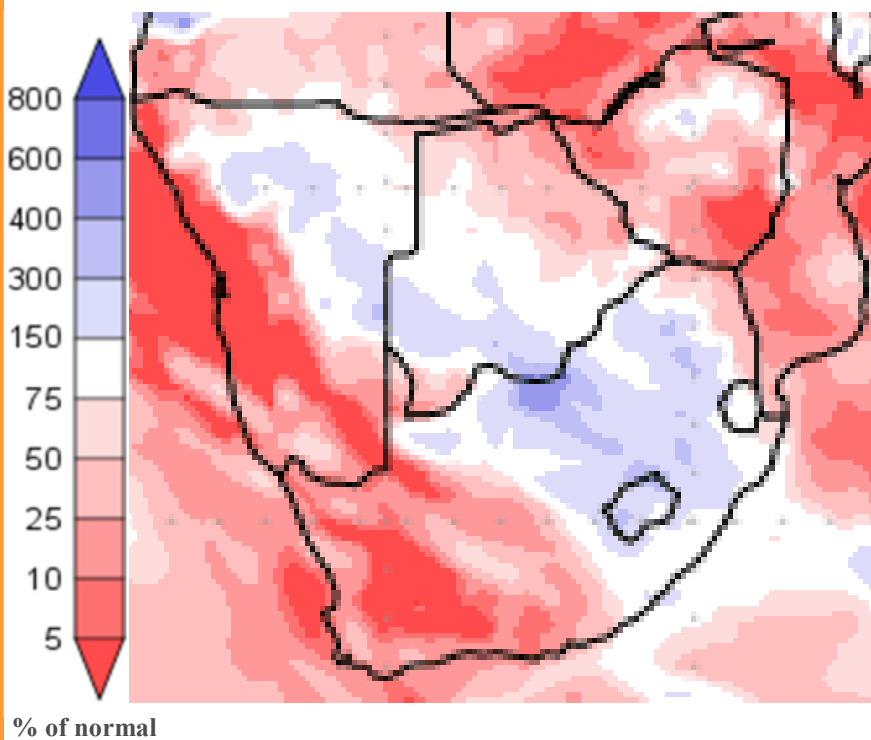


Figure 4: Precipitation (% of normal) for Tuesday 1 November 2016 to Wednesday 8 November 2016

Large parts of the summer rainfall region will receive normal to above normal rainfall. Areas in northern Limpopo will receive below normal temperatures.

Precipitation forecasts from the **National Centers for Environmental Prediction**.

Normal rainfall derived from CMAP monthly climatology for 1979 – 2003

Information from: <http://www.wxmaps.org/outlooks.php>

Credits:

1. The Center for Ocean-Land-Atmosphere Studies
2. George Mason University

Official Disclaimer: COLA makes no guarantees about and bears no responsibility or liability concerning the accuracy or timeliness of the images being published on these web pages. All images are generated by COLA and do not represent the actual forecasts issued by the National Weather Service. These products are not a substitute for official forecasts and are not guaranteed to be complete or timely. The underlying data are the direct product of the various operational forecast models run by the [National Centers for Environmental Prediction](#), [National Weather Service](#), [NOAA](#) and are presented without correction.

Monthly Climate Watch reports: <http://www.manstratais.co.za/climatewatch.aspx>

Manstrat Website: <http://www.manstratais.co.za/>

Twitter: <https://twitter.com/ManstratAIS> or follow @ManstratAIS

Facebook: <https://www.facebook.com/manstratais/>

